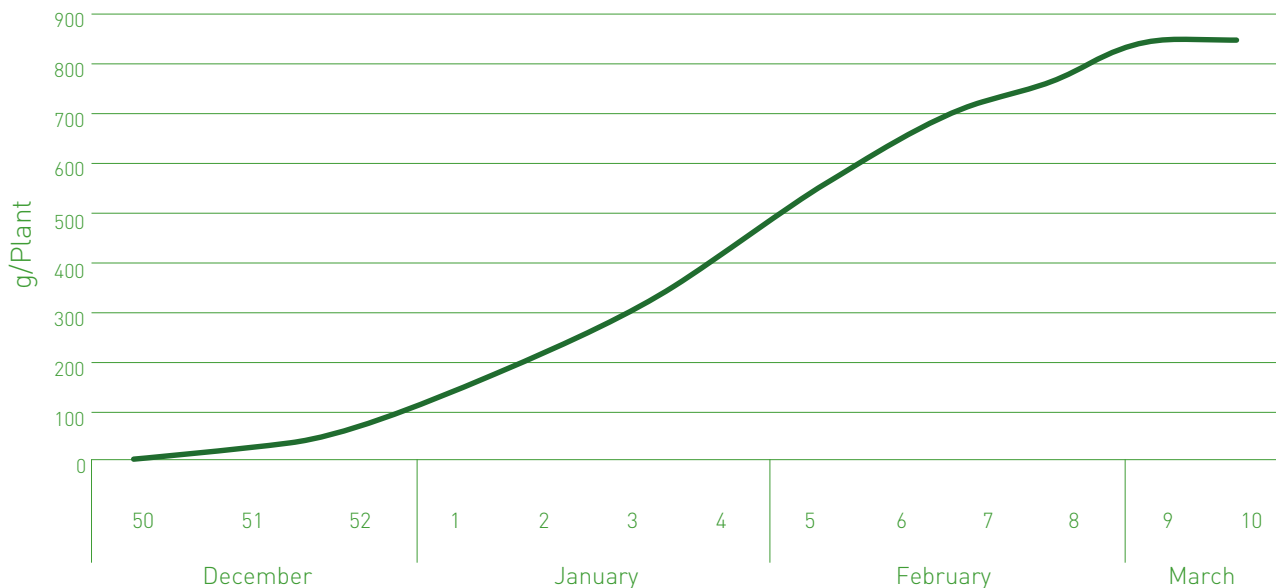




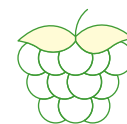
PINK HUDSON® (Plapink 14103)

WINTER PRODUCTION

Cumulative production Pink Hudson®



| YIELD



Production season:
Winter



Average yield:
1,100 g/plant

Pink Hudson® production vs FOB Andalusia prices



The data included in this technical dossier are the average results obtained in the 19/20, 20/21, 21/22 and 22/23 campaigns with plantations on August 5th of each year in the Planasa R&D trial field in Cartaya.

| PREMIUM QUALITY



Average weight of the fruit:
4.8 g



First category fruit:
95 %



Brix:
9.6°

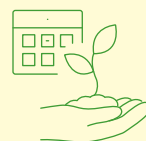
| ADDITIONAL INFORMATION



It is recommended to place the plant order at the end of June one year before planting.



Tray with 77 cells.



In order to obtain a winter harvest, it is recommended to plant between July and August, in those areas where the weather allows it.





PLANASA.COM

"The data and results contained in this document are for information purposes only and are NOT CONTRACTUAL. These data have been obtained under specific and controlled conditions. Plants belong to the domain of the living and are affected, in their productive process, by a plurality of factors such as climatic and geographical conditions, field management or soil characteristics. Therefore, Planasa DOES NOT GUARANTEE that the results of its operations will be obtained, even if the indications contained herein have been followed. We kindly recommend you to request an appointment with a Planasa technical advisor to visit the Planasa facilities closest to your location and evaluate the planting of the variety".